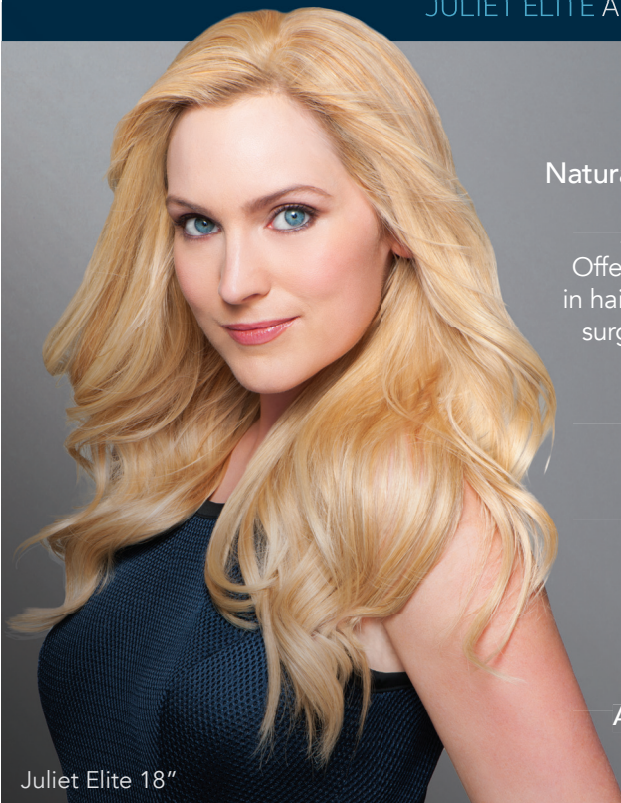




1301 International Pkwy, Ste. 310
Sunrise, FL 33323-2874

hairuwear.com/american-hairlines

JULIET ELITE ALSO AVAILABLE IN 18" LENGTH



Natural styling. Superior technology.
Unmatched confidence.

Offer your clients the ultimate solution
in hair replacement with the finest non-
surgical systems on the market today.



Call your
American Hairlines Representative
to Order: 1-888-766-6832

Juliet Elite 18"

©2016 HairUWear Inc.

NEW!



BY POPULAR DEMAND...
NEW JULIET ELITE – 12" Length



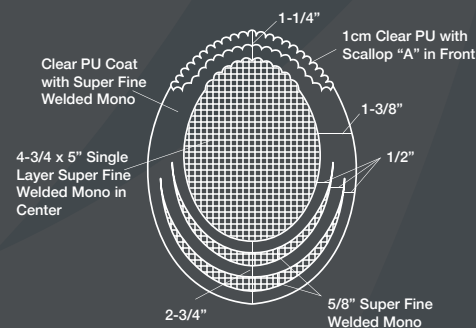
NEW!

Juliet Elite 12"

You asked for it, and we've delivered! A new, shorter length in your favorite top-of-head system, for clients who prefer a closer crop. Less length, less waste, more savings.

Even better? Both lengths of Juliet Elite are now available in a new, naturally highlighted blonde shade. Ask for color R13S.

Designed for the client who needs moderate coverage, *Juliet Elite* offers women fashion that's as flexible as it is comfortable. The super-fine welded mono top allows for styling in any direction and the sheer scalloped front hairline is beautifully undetectable. *Juliet Elite* is available in 23 Natural Advantage™ shades.



- ❖ **CONSTRUCTION:** 100% Hand-Crafted
- ❖ **SIZE:** 7 1/2" x 9" (may be reduced)
- ❖ **DESIGN:** Fine Welded Mono Base; Clear PU Front and PU Coated Perimeter (may be full head bonded)
- ❖ **STYLE:** Freestyle
- ❖ **HAIR LENGTH:** New 12" or 18"
- ❖ **DENSITY:** Medium
- ❖ **WAVE PATTERN:** Water Wave
- ❖ **SUGGESTED SYSTEMS:** 4 Annually
- ❖ **100% HUMAN HAIR**



Before

American
Hairlines
KNOW NO BOUNDARIES™

SPOTLIGHT ON: JULIET ELITE 12"
CALL AMERICAN HAIRLINES AT 888.766.6832

HAIR U WEAR®
©2016 HairUWear, Inc.
hairwear.com/american-hairlines